



Since 1956

650 South Main Street - Hector, Minnesota 55342 USA
320-848-6266 or 800-828-7624 - loftness.com - info@loftness.com

Effective Date
February 1, 2010

2010 RETAIL PRICES

Subject to Change - USD
FOB Factory - Uncrated

10-20 ton Excavator-mounted Carbide Cutter



NEW!

**FORESTRY
MULCHING
HEADS
for
EXCAVATORS**

Standard Features & Specifications For Use on 10-20 Ton Excavators

Factory approved applications only. Please Call

- Voac Bent-axis Piston Motors
- Premium Strength Steel Housing
- Machined Bearing Anti-wrap Design
- 4-Groove Banded Belt
- Skid Shoes
- Hitch Transferable to Three Positions
- Rotor Speed 1600-2000 rpm
- Efficient Spiral Carbide Tooth Pattern
- 50-100 Hydraulic Horsepower Required
- Heavy-duty Overhung Bearing Block
- Built-in Re-cutter Bar at Discharge
- Steel Deflector Chains
- Spring-loaded Belt Tightener
- Two Stage Cutting Chamber
- 17 inch Diameter Rotor
- 2-3/16" Piloted Double Taper Roller Bearings
- Carbide Teeth with Forged Steel Holders
- Taper-lock Sheaves



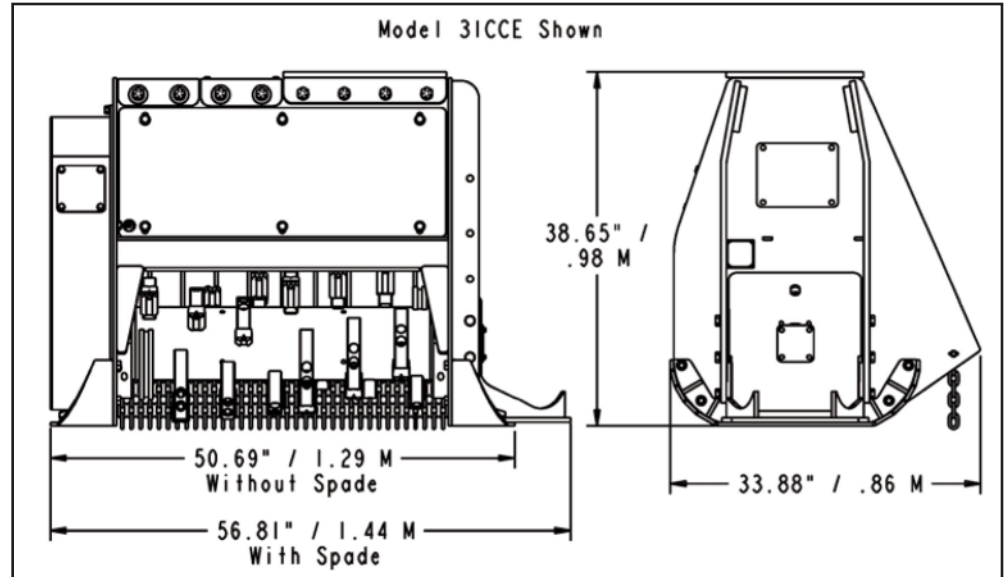
2010 RETAIL PRICES

Effective Date
February 1, 2010

Subject to Change - USD FOB Factory - Uncrated

CARBIDE CUTTER

10-20 ton Excavator Mounted Carbide Cutter



Specifications

| | 31CCE | 41CCE | 51CCE | 61CCE |
|--------------------------|---------------|---------------|---------------|----------------|
| Width of Cut | 31"/.78 M | 41"/1.04 M | 51"/1.29 M | 61"/1.55 M |
| Overall Width | 51"/1.04 M | 61"/1.55 M | 71"/1.80 M | 81"/2.06 M |
| Overall Width with Spade | 57"/1.45 M | 67"/1.70 M | 77"/1.96 M | 87"/2.21 M |
| Number of Carbides | 18 | 24 | 30 | 36 |
| Weight | 1650lbs/750kg | 1900lbs/862kg | 2150lbs/975kg | 2400lbs/1090kg |

Prices

| | | | | |
|---------------------------------|---------------------------|---------------------------|---------------------------|---------------------------|
| Standard Carbides List Price | 31CCES530 \$ 25,828.00 | 41CCES530 \$ 26,968.00 | 51CCES530 \$ 28,108.00 | 61CCES530 \$ 29,248.00 |
| Planer Carbides List Price | 31CCEP530 \$ 26,008.00 | 41CCEP530 \$ 27,208.00 | 51CCEP530 \$ 28,408.00 | 61CCEP530 \$ 29,608.00 |

Options

| | | | | |
|---|-----------------------|-----------------------|-----------------------|-----------------------|
| Set of Replacement Standard Carbides | N25141 \$ 1,170.00 | N25142 \$ 1,560.00 | N25143 \$ 1,950.00 | N25144 \$ 2,340.00 |
| Set of Replacement Planer Carbides | N25145 \$ 1,350.00 | N25146 \$ 1,800.00 | N25147 \$ 2,250.00 | N25148 \$ 2,700.00 |
| 2nd Shear Bar | N24149 \$ 400.00 | N29150 \$ 450.00 | N20282 \$ 500.00 | N20281 \$ 550.00 |
| End Spade with Hook | N24142 \$ 260.00 | N24142 \$ 260.00 | N24142 \$ 260.00 | N24142 \$ 260.00 |
| Crating Charge (net) | \$ 125.00 | \$ 135.00 | \$ 145.00 | \$ 155.00 |

Please Note: The Planer teeth, with their surface-mounted carbides and sharper cutting edges, are more susceptible to damage and are NOT recommended for rocky conditions.

Visit our Carbide Cutter web site. www.carbide-cutter.com



e-mail: info@loftness.com - Fax: 320-848-6269
650 South Main Street - Hector, MN 55342 USA