

# LOFTNESS

Since 1956

650 South Main Street - Hector, Minnesota 55342 USA  
320-848-6266 or 800-828-7624 - [loftness.com](http://loftness.com) - [info@loftness.com](mailto:info@loftness.com)

Effective Date  
February 1, 2010  
N14520

**2010 RETAIL PRICES**

Subject to Change - USD  
FOB Factory - Uncrated

# SNOWBLOWERS

[www.snowblowers.com](http://www.snowblowers.com)

New  
Lower  
Prices  
"L" series  
"T" series  
All Skid-steer models



**Inside: Standard Snowblowers**  
**Front-mounted for Skid-steer Loaders**  
**Rear-mounted Three-point Hitch for Tractors**

International: 320-848-6266 - Sales Fax: 320-848-6269 - New Parts Fax: 320-848-6055  
E-mail Address: [Info@loftness.com](mailto:Info@loftness.com) - Web Address: [www.loftness.com](http://www.loftness.com)



650 South Main Street - Hector, Minnesota 55342 USA  
 320-848-6266 or 800-828-7624 - loftness.com - info@loftness.com

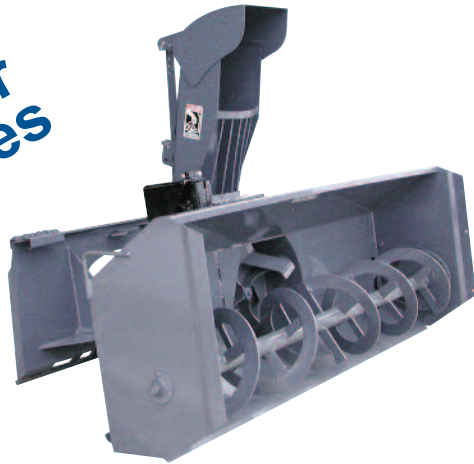
Effective Date  
 February 1, 2010  
 N14520

## 2010 RETAIL PRICES

Subject to Change - USD  
 FOB Factory - Uncrated

### Snowblowers for Standard-flow Skid-steers

**New  
 Lower  
 Prices**



### 15-20 GPM Flows

Snowblowers for  
 Standard-flow  
 Skid-steers

### Standard Features and Specifications

- \* NEW Bolt-on Cutting Edge
- \* NEW Hoses Included (couplers are not)
- \* NEW Wiring Harness & Switch Included
- \* Flow Ranges from 15-20 GPM
- \* Two-stage Design
- \* Electric Spout Rotator
- \* Adjustable Deflector (Electric option)
- \* Universal Skid-steer Mount
- \* Charcoal Grey Paint
- \* 28 inch Cutting Height
- \* Hardened Steel Cutting Edge
- \* Adjustable Skid Shoes
- \* Gear-driven Spout 270 Degrees
- \* 20 inch Diameter Fan
- \* 9.5 inch Diameter Spout
- \* 13 inch Diameter Open-spoke Auger
- \* 1 inch Bearings on Auger & Drive
- \* # 50 Roller Chain
- \* 35 HP Oilbath Gearbox

### Specs & Pricing

Model Number	Width (inches)	Weight (pounds)	Hydraulic Requirement	List Price (USD)
601ES	60	600	15-16 GPM	\$ 5,810.00
721ES	72	615	15-16 GPM	\$ 5,910.00
721EM	72	615	17-20 GPM	\$ 5,910.00
781EM	78	645	17-20 GPM	\$ 6,010.00

Electric Spout Deflector (includes generic harness & switch) \$ 440.00  
 Crating (net prices) 601 = \$100.00 721 = \$120.00 781 = \$140.00

International: 320-848-6266 - Sales Fax: 320-848-6269 - New Parts Fax: 320-848-6055  
 E-mail Address: [info@loftness.com](mailto:info@loftness.com) - Web Address: [www.loftness.com](http://www.loftness.com)

## Snowblowers for High-flow Skid-steers

**New  
Lower  
Prices**

### 21-40 GPM Flows

High Capacity  
Snowblowers to  
Get the Job Done  
in Less Time



### Features and Specifications

- \* **NEW** Bolt-on Cutting Edge
- \* **NEW** Hoses Included (couplers are not)
- \* **NEW** Wiring Harness & Switch Included
- \* Flow Ranges from 21-60 GPM
- \* Two-stage Design
- \* Electric Spout Rotator w/harness & Switch
- \* Adjustable Deflector (Electric option)
- \* Universal Skid-steer Mount
- \* Charcoal Grey Paint
- \* 32 inch Cutting Height
- \* Hardened Steel Cutting Edge
- \* Adjustable Skid Shoes
- \* Gear-driven Spout 270 Degrees
- \* 24 inch Diameter Fan
- \* 11 inch Diameter Spout
- \* 16 inch Diameter Open-spoke Auger
- \* 1-3/8 inch Bearings on Auger & Drive
- \* # 60 Roller Chain
- \* 120 HP Oilbath Gearbox

### Specs & Pricing

Model Number	Width (inches)	Weight (pounds)	Hydraulic Requirement	List Price (USD)
721D1	72	940	21-25 GPM @ up to 3500 PSI	\$ 7,010.00
721D2	72	940	26-32 GPM @ up to 3500 PSI	\$ 7,110.00
841D2	84	972	30-32 GPM @ up to 3500 PSI	\$ 7,410.00
841D3	84	1000	33-40 GPM @ up to 3500 PSI	\$ 7,910.00

Electric Spout Deflector (includes generic harness & switch) \$ 440.00

Crating (net prices) 721 = \$120.00 - 841 = \$155.00

Visit our snowblower web site. [www.snowblowers.com](http://www.snowblowers.com)

e-mail: [info@loftness.com](mailto:info@loftness.com) - Fax: 320-848-6269



650 South Main Street - Hector, MN 55342 USA



Since 1956

650 South Main Street - Hector, Minnesota 55342 USA  
320-848-6266 or 800-828-7624 - loftness.com - info@loftness.com

Effective Date  
February 1, 2010  
N14520

## 2010 RETAIL PRICES

Subject to Change - USD  
FOB Factory - Uncrated

### "L" Series Rear-mounted Snowblowers for Tractors

New  
Lower  
Prices



Light-duty  
up to 35 HP

601L - 60 inch

721L - 72 inch

### Features and Specifications

- \* NEW Bolt-on Cutting Edge
- \* 540 RPM PTO Shaft
- \* 35 HP Oilbath Gearbox
- \* 20 inch Diameter Fan - 540 RPM
- \* 16 inch Diameter Open-spoke Auger
- \* 29 inch Cutting Height
- \* 1 inch Bearings on Auger & Drive
- \* Two-stage Design
- \* Category I Adjustable Hitch
- \* # 50 Roller Chain
- \* Rear-mounted
- \* Hardened Steel Cutting Edge
- \* Adjustable Skid Shoes
- \* Gear-driven Spout 270 Degrees
- \* 9.5 inch Diameter Spout
- \* Telescoping Hand Crank
- \* Adjustable Deflector
- \* Shear-bolt Protection
- \* Well-supported Idler
- \* Free-link Hitch

### Specs & Pricing

Model	Width of Cut	Weight	HP Req.	List Price
601L	60 inch	467 pounds	16-35	\$ 4,010.00
721L	72 inch	514 pounds	20-35	\$ 4,210.00

Hydraulic Spout Rotator or Deflector (hoses not included) \$ 310.00  
 Electric Spout Rotator or Deflector (includes generic harness & switch) \$ 440.00

Crating (net prices)                      601 = \$100.00    721 = \$120.00

International: 320-848-6266 - Sales Fax: 320-848-6269 - New Parts Fax: 320-848-6055  
E-mail Address: [Info@loftness.com](mailto:Info@loftness.com) - Web Address: [www.loftness.com](http://www.loftness.com)

Effective Date  
February 1, 2010

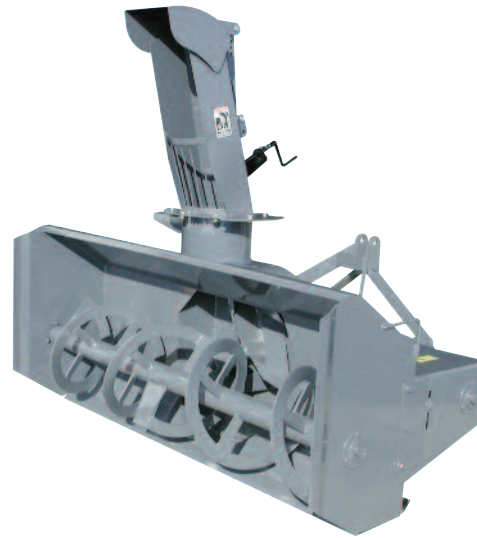
**LOFTNESS** 2010 RETAIL PRICES

Subject to Change - USD  
FOB Factory - Uncrated

## “S” Series Rear-mounted Snowblowers for Tractors

Standard-duty from  
35 to 120 HP

721S - 72 inch  
841S - 84 inch



### Features and Specifications

- \* **NEW** Bolt-on Cutting Edge
- \* 540 RPM PTO Shaft
- \* 120 HP Oilbath Gearbox
- \* 27 inch Diameter, 3 Blade Fan
- \* 16 inch Diameter Open-spoke Auger
- \* 32 inch Cutting Height
- \* 1- 3/8 inch Bearings on Auger & Drive
- \* # 60 Roller Chain
- \* Two-stage Design
- \* Category I or II Welded Hitch
- \* Hitch is Designed for Free-link Only
- \* Rear-mounted
- \* Hardened Steel Cutting Edge
- \* Adjustable Skid Shoes
- \* Gear-driven Spout 270 Degrees
- \* 11 inch Diameter Spout
- \* Telescoping Hand Crank
- \* Adjustable Deflector
- \* Shear-bolt Protection
- \* Well-supported Idler
- \* Large Diameter Auger Tube
- \* Hitch Stand

### Specs & Pricing

Model	Width of Cut	Weight	HP Req.	List Price
721S	72 inch	869 pounds	35-80	\$ 5,610.00
841S	84 inch	912 pounds	40-120	\$ 5,910.00

Hydraulic Spout Rotator or Deflector (hoses not included) \$ 310.00  
Electric Spout Rotator or Deflector (includes generic harness & switch) \$ 440.00

Crating (net prices) 721 = \$120.00 841 = \$155.00

Visit our snowblower web site. [www.snowblowers.com](http://www.snowblowers.com)

e-mail: [info@loftness.com](mailto:info@loftness.com) - Fax: 320-848-6269

**LOFTNESS**

650 South Main Street - Hector, MN 55342 USA



Since 1956

650 South Main Street - Hector, Minnesota 55342 USA  
320-848-6266 or 800-828-7624 - loftness.com - info@loftness.com

Effective Date  
February 1, 2010  
N14520

## 2010 RETAIL PRICES

Subject to Change - USD  
FOB Factory - Uncrated

### “S” Series Rear-mounted Snowblowers for Tractors



Standard-duty from  
60 to 120 HP - 540 RPM

- 842S - 84 inch Double Auger
- 961S - 96 inch Single Auger
- 962S - 96 inch Double Auger

**Direct Drive Gearbox**



### Features and Specifications

- \* **NEW** Bolt-on Cutting Edge
- \* 540 RPM PTO Shaft
- \* 120 HP Oilbath Gearbox
- \* Heavy-duty Open-spoke Auger
- \* 30 in. Dia. Fan Housing, 11 in. Deep
- \* # 60 HD Roller Chain
- \* 1- 3/8 inch Bearings on Auger & Drive
- \* Two-stage Design
- \* Category II or III Welded Hitch
- \* **Hitch Designed for Quick Hitch Only**
- \* Uni-body Design
- \* Body Reinforcements
- \* Hitch Stand
- \* Rear-mounted
- \* Hardened Steel Cutting Edge
- \* Adjustable Skid Shoes
- \* Gear-driven Spout 270 Degrees
- \* 14 inch Diameter Heavy-duty Spout
- \* Hydraulic Spout Rotator (no hoses)
- \* Adjustable Deflector
- \* Shear-bolt Protection
- \* Easy-access Shear-bolts
- \* Lateral Auger-locking Device
- \* Well-supported Idler
- \* Heavy-duty Construction
- \* Charcoal Grey Paint

### Specs & Pricing

Model	Width of Cut	Height of Cut	Weight	Auger Dia.	HP Required	List Price
842S	84 inch	48 inch	1577 pounds	2-16 inch	60-120	\$ 9,610.00
961S	96 inch	40 inch	1548 pounds	1-24 inch	80-120	\$ 9,210.00
962S	96 inch	48 inch	1665 pounds	2-16 inch	90-120	\$ 9,910.00

Hydraulic Spout Deflector (hoses not included) \$ 310.00

Electric Deflector (includes generic harness & switch) \$ 440.00

Truck-loading Spout Outright (requires deflector) \$ 1,150.00

Extra Long 540 PTO - (for certain applications including - engine end mounting on NH bi-directional) \$ 680.00 (in-lieu) \$ 680.00

Note: This is a 540 RPM Blower Only. For 1000 RPM Blowers See “H” or “I” Series

Crating (net prices) 842 = \$240.00 - 961 & 962 = \$275.00

**International: 320-848-6266 - Sales Fax: 320-848-6269 - New Parts Fax: 320-848-6055**

**E-mail Address: [Info@loftness.com](mailto:Info@loftness.com) - Web Address: [www.loftness.com](http://www.loftness.com)**



Since 1956

650 South Main Street - Hector, Minnesota 55342 USA  
320-848-6266 or 800-828-7624 - loftness.com - info@loftness.com

Effective Date  
February 1, 2010  
N14520

## 2010 RETAIL PRICES

Subject to Change - USD  
FOB Factory - Uncrated

### “H” Series Rear-mounted Snowblowers for Tractors

**Direct Drive  
Gearbox**

**PTO speed =  
Fan speed**



Heavy-duty from  
100 to 200 HP  
1000 or 540 RPM  
962H - 96 inch  
Double Auger  
1082H - 108 inch  
Double Auger

### Features and Specifications

- \* **NEW** Bolt-on Cutting Edge
- \* 540 or 1000 RPM PTO Shaft
- \* 200 HP Oilbath Gearbox
- \* Two 16 inch Dia. Open-spoke Augers
- \* 30 in. Dia. Fan Housing, 11 in. Deep
- \* # 80 Roller Chain
- \* 1-1/2 inch Bearings on Auger & Drive
- \* Two-stage Design
- \* Category II or III Welded Hitch
- \* **Hitch Designed for Quick Hitch Only**
- \* 48 inch Cutting Height
- \* Body Reinforcements
- \* Hitch Stand
- \* Rear-mounted
- \* Hardened Steel Cutting Edge
- \* Adjustable Skid Shoes
- \* Gear-driven Spout 270 Degrees
- \* 14 inch Diameter Heavy-duty Spout
- \* Hydraulic Spout Rotator (no hoses)
- \* Adjustable Deflector
- \* Shear-bolt Protection
- \* Easy-access Shear-bolts
- \* Lateral Auger-locking Device
- \* Well-supported Idler
- \* Heavy-duty Construction
- \* Charcoal Grey Paint

### Specs & Pricing

Model	Width of Cut	Weight	HP Required @ PTO Speed	List Price
962H	96 inch	1833 pounds	100 @ 540 - 150@1000	\$ 10,410.00
1082H	108 inch	1988 pounds	120 @ 540 - 160@1000	\$ 10,710.00

Hydraulic Spout Deflector (hoses not included) \$ 310.00

Electric Deflector (includes generic harness & switch) \$ 440.00

Truck-loading Spout Outright (requires deflector) \$ 1,150.00

1-3/4 inch - 1000 RPM PTO Shaft in lieu of 1-3/8 inch shaft \$ 150.00

Extra Long 540 PTO - (for certain applications including - engine end mounting on NH bi-directional) \$ 680.00 (in-lieu) \$ 680.00

**Crating (net prices) 962 = \$275.00 - 1082 = \$330.00**

**International: 320-848-6266 - Sales Fax: 320-848-6269 - New Parts Fax: 320-848-6055**

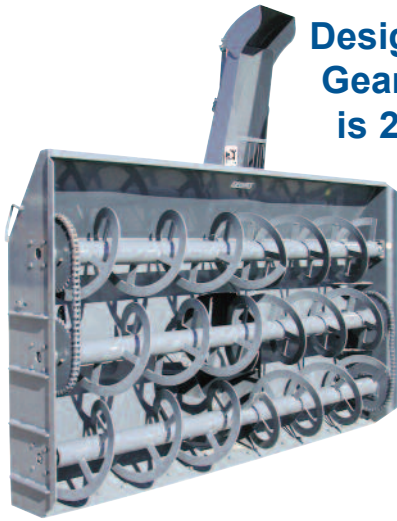
**E-mail Address: [Info@loftness.com](mailto:Info@loftness.com) - Web Address: [www.loftness.com](http://www.loftness.com)**

Effective Date  
February 1, 2010

# LOFTNESS 2010 RETAIL PRICES

Subject to Change - USD  
FOB Factory - Uncrated

## "I" Series Rear-mounted Snowblowers for Tractors



Designed for tractors with TALL TIRES.  
Gearbox shaft height from the ground  
is 27 inches. Extra-long hitch & PTO

Industrial-duty from  
140 to 200 HP  
1082I - 108 inch  
Double Auger  
1083I - 108 inch  
Triple Auger



**Reduction Gearbox - 1000 RPM PTO = 540 Fan speed**

### Features and Specifications

- \* 1000 RPM PTO Shaft
- \* 200 HP Reduction Gearbox
- \* 16 inch Dia. Open-spoke Augers
- \* 36 in. Dia. Fan Housing, 12 in. Deep
- \* # 80 Roller Chain
- \* 1-1/2 inch Bearings on Auger & Drive
- \* Two-stage Design
- \* Category II or III Welded Hitch
- \* **Hitch Designed for Quick Hitch Only**
- \* Body Reinforcements
- \* Hitch Stand
- \* Bolt-on, Hardened Steel, Cutting Edge
- \* Adjustable Skid Shoes
- \* Gear-driven Spout 270 Degrees
- \* 14 inch Diameter Heavy-duty Spout
- \* Hydraulic Spout Rotator (no hoses)
- \* Adjustable Deflector
- \* Shear-bolt Protection
- \* Easy-access Shear-bolts
- \* Lateral Auger-locking Device
- \* Heavy-duty Construction
- \* Charcoal Grey Paint

**New  
Lower  
Prices**

### Specs & Pricing

Model	Width of Cut	Height of Cut	Weight	HP Required	List Price
1082I	108 inch	48 inch	2283 pounds	140-200	\$ 11,810.00
1083I	108 inch	72 inch	2850 pounds	175-200	\$ 13,910.00

Hydraulic Spout Deflector (hoses not included)	\$ 310.00
Electric Spout Deflector (includes generic harness & switch)	\$ 440.00
Truck-loading Spout Outright (requires deflector)	\$ 1,150.00
1-3/4 inch - 1000 RPM PTO Shaft in lieu of 1-3/8 inch shaft	\$ 150.00

Crating (net price) 1082 = \$300.00 - 1083 = \$350.00

Visit our snowblower web site. [www.snowblowers.com](http://www.snowblowers.com)

e-mail: [info@loftness.com](mailto:info@loftness.com) - Fax: 320-848-6269



650 South Main Street - Hector, MN 55342 USA