



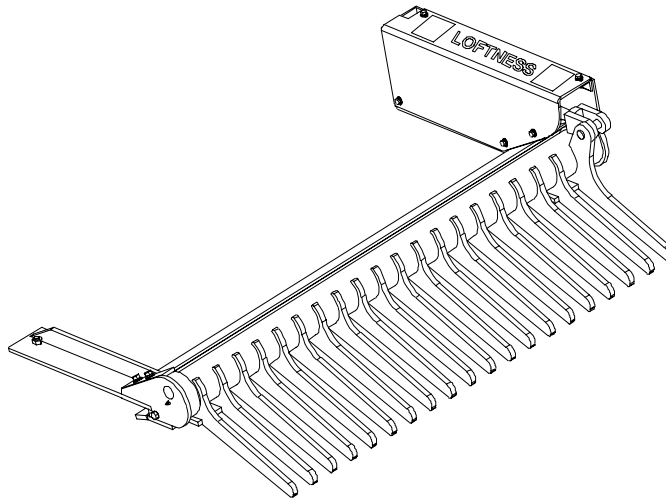
Pik-Tatch

Loader Mounted Rockpicker

Model 580PT Model 640PT Model 700PT

Parts Book

(2002)



Model Number: _____

Serial Number: _____

Date of Purchase: _____



Specialized
Equipment, Inc.

650 So. Main Street - PO Box 337 - Hector, MN 55342
Business Phone: 320-848-6266 * Fax: 320-848-6269 * Toll Free: 1-800-828-7624

LOFTNESS SPECIALIZED EQUIPMENT, INC.

WARRANTY POLICY

The warranty policy begins upon delivery of the unit to the original customer.

Loftness one (1) year warranty policy covers only the Crop Shredders, Snowblowers, and Kwik-Piks.

Loftness six (6) month warranty policy covers Timber Axes, Timber Ax Extremes, Carbide Cutters, Brush Shredders, Flail Mowers, and BPOs.

If any Loftness product is used as a rental unit, the warranty period extends for only 30 days from the delivery date to the original customer.

Loftness Specialized Equipment, hereinafter referred to as LOFTNESS, a manufacturer of quality machinery since 1956, warrants new LOFTNESS machinery and/or attachments at the time of delivery to the original purchaser, to be free from defects in material and workmanship when properly set up and operated in accordance with the recommendations set forth in the LOFTNESS Operator's Manual.

LOFTNESS' liability for any defect with respect to accepted goods shall be limited to repairing the goods at an authorized dealer or other LOFTNESS designated location, or replacing them as LOFTNESS shall elect. The above shall be in accordance with LOFTNESS warranty adjustment policies. This warranty shall not apply to any machine or attachment which shall have been repaired or altered outside the LOFTNESS factory or authorized LOFTNESS dealership or in any way so as in LOFTNESS' judgment, to affect its stability or reliability, nor which has been subject to misuse, negligence or accident, nor to any machine or attachment which shall not have been operated in accordance with LOFTNESS' printed instructions or beyond the company recommended machine rated capacity.

WARRANTY REQUIREMENTS

Warranty registration form must be filled out and returned to Loftness Specialized Equipment to validate all future warranty claims.

LIMITATIONS OF WARRANTY

All Shredders – LOFTNESS shredders are designed to provide years of dependable service when proper use and maintenance is adhered to. The potential for misuse in many applications exists, therefore a limited warranty is provided as follows:

All Shredders – Rotor Balance: Critical rotor balance can be affected by conditions beyond LOFTNESS' control, such as the operation of a shredder beyond the Company's rated capacity, improper knife replacement, missing knives, striking foreign objects, lack of lubrication, etc. Any failure resulting from running in as "out-of-balance" condition, such as, but not limited to bearing and or drive-line failure, metal fatigue, cracks, etc. will be considered abuse and will not be covered under warranty. LOFTNESS may elect to have an area representative evaluate the condition of the machine before warranty is considered.

To receive a warranty claim, a return authorization from LOFTNESS must be obtained. The failed part may then be returned in an untampered status. This warranty does not include freight or delivery charges incurred when returning machinery for servicing. Dealer mileage, service calls and pick-up/delivery charges are the customer's responsibility.

EXCLUSIONS OF WARRANTY

Except as otherwise expressly stated herein, LOFTNESS makes no representation or warranty of any kind, expressed or implied, and makes no warranty of merchantability in respect to its machinery and/or attachments and makes no warranty that its machinery and/or attachments are fit for any particular purpose. LOFTNESS shall not be liable for incidental or consequential damages for any breach of warranty, including but not limited to inconvenience, rental or replacement equipment, loss of profits or other commercial loss. Upon purchase the buyer assumes all liability, all personal injury and property damage resulting from the handling, possession or use of the goods by the buyer.

No agent, employee, or representative of LOFTNESS has any authority to bind LOFTNESS to any affirmation, representation or warranty concerning its machinery and/or attachments except as specifically set forth herein.

Service Parts

Ordering Service Parts:

To assist our customer service department in providing you with the correct replacement parts promptly and accurately, follow the ordering instructions as listed below.

1. Order replacement parts by providing the following information:
 - A) Pik-Tatch serial number – Refer to serial number plate, which also includes the model number, located on left end plates back corner, near the top . Or if the plate is missing, check the left end plates lower back corner for the serial number as it is stamped into the end plate. Refer to page 12 for all decal locations and additional service information.
 - B) Part description - Illustration drawings are provided to assist in identifying the parts by description and part numbers. Use this information to insure that correct service parts are ordered and sent to you.
 - C) Quantities - Order the exact number of parts required, do not order by “sets”.
 - D) Shipping instructions - Give company/customer name, shipping point or will call and mailing addresses notification if different than shipping point. State whether freight, express, parcel or other handling is desired. Confirm telephone orders in writing.
2. Inspection of parts when received is important. Damages or shortages should be brought to the attention of the carrier at the time the parts are accepted. Shipper's responsibilities cease upon delivery of shipment, in good order, to the customer.

Return Policy:

Return of parts for either warranty or incorrect parts received, must have a “Return of Materials Authorization” (RMA) number. Call Loftness Specialized Equipment, Inc. service department for this return number. To receive this number, you will need your “Sales Order, Invoice and Part Numbers” with quantities of parts to be returned. Credit information and shipping instructions will be given to you when you have received your “RMA” number. Be sure to place this number on the outside of the shipping package and on any documents placed inside.

Illustrated Parts Listings:

Illustrated parts drawings are included in this section, starting with page 12 that will assist you in identifying your Pik-Tatch and the parts available for service. These pages include part numbers, descriptions and quantities required for the various sizes of Pik-Tatch. Include this information on your purchase orders to insure correct receiving of replacement parts.

Safety and Operational Decals:

The following decals are placed in strategic positions on the unit to provide the operator with a continual reminder of the safe operating practices. If they become damaged or lost, replace them immediately. .

Replacement of Decals:

Surfaces must be free from dirt, dust, grease and other foreign material before applying the new decal. Refer to illustration drawing on page 12 for placement of below listed decals.

- 4137 Grease - (2) required
- 4138 F.E.M.A. - (1) required
- 4189 Warning - Rotating Parts - (1) required
- 4256 Caution - Do Not Start - (1) required
- N12684 Loftness - Small 3 D - (1) required
- N12685 Loftness - Medium 3 D - (1) required
- N13721 Model & Serial Number Tag - (1) required

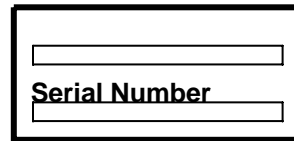


4137



Model Number

4138



N13721



4189



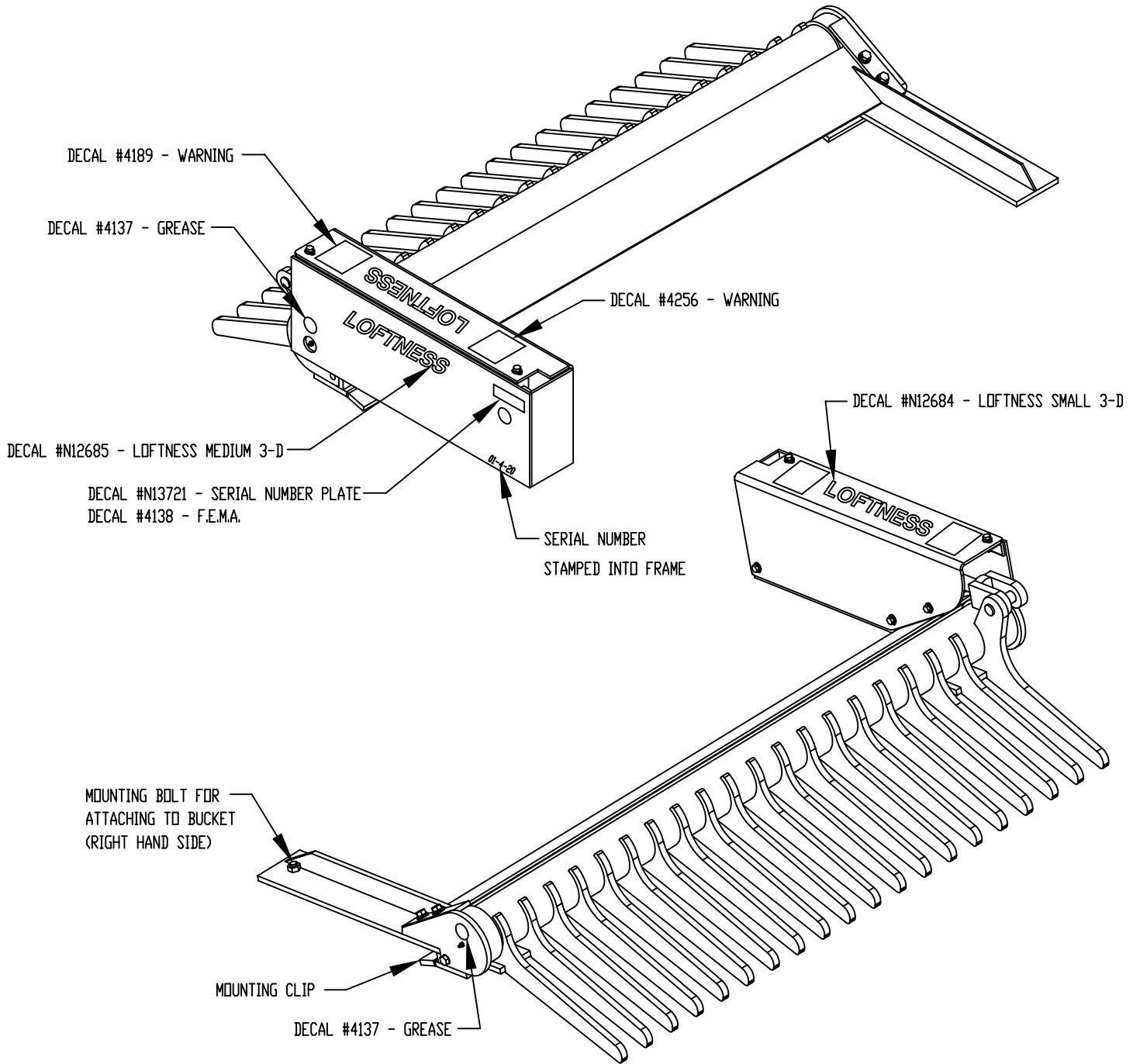
4256



N12684 & N12685

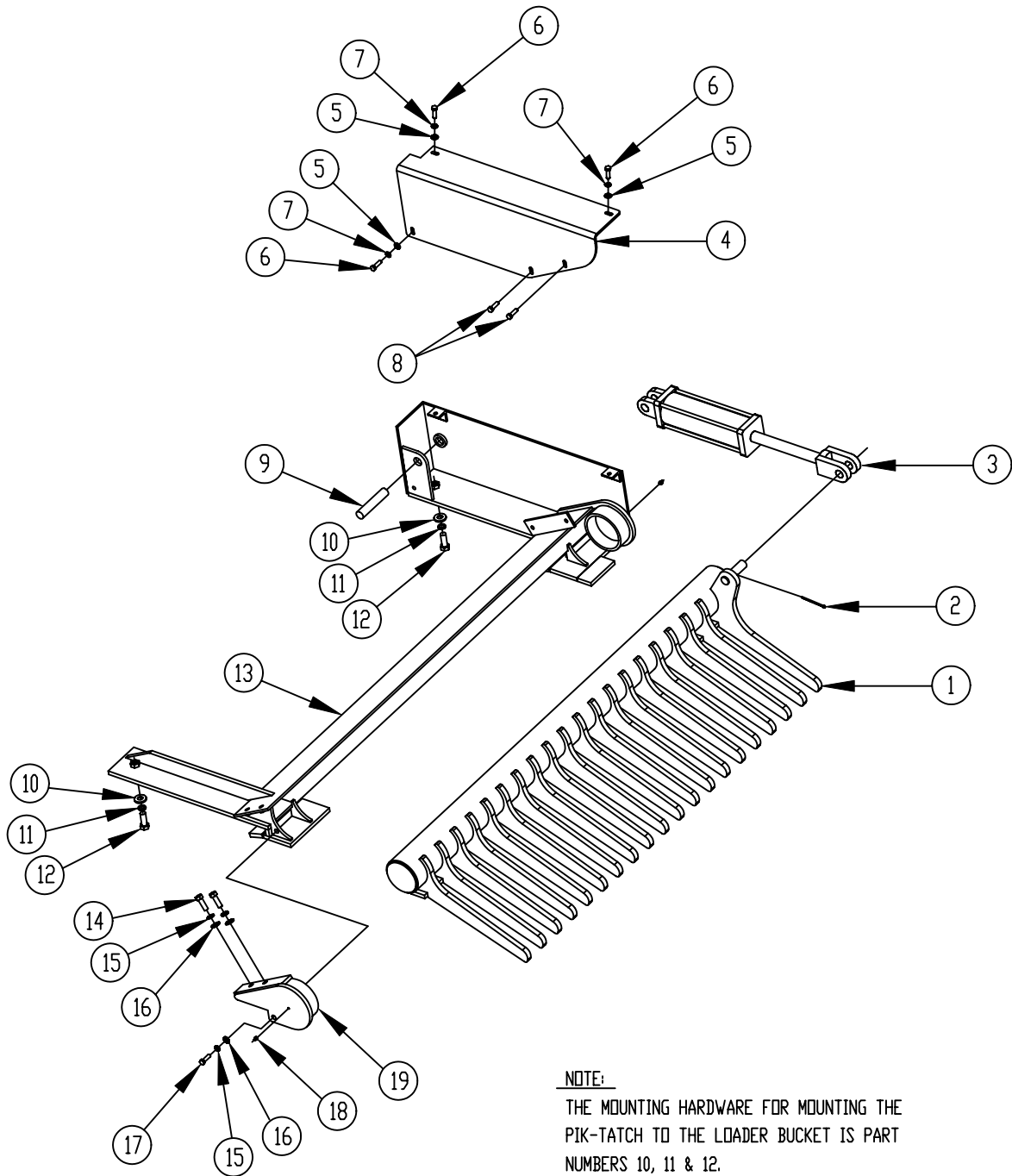
PIK-TATCH MAIN ILLUSTRATION

MODELS 580PT, 640PT, 700PT



THIS ILLUSTRATION PAGE IS A GENERAL OVERVIEW OF THE LOFTNESS PIK-TATCH. SHOWN IS THE DECAL PLACEMENT AND REFERENCES TO THE DIFFERENT PAGES WHICH SHOW THE PARTS BREAK DOWN OF VARIOUS ASSEMBLIES. THE OPERATING AND MAINTENANCE SECTIONS, 2 AND 3, EXPLAINS THE ASSEMBLY OF THE PIK-TATCH PARTS AND ALSO WILL REFER TO THESE PAGES AS PICTORIAL GUIDES IN SERVICING YOUR PIK-TATCH.

PIK TATCH MAIN BODY ILLUSTRATION AND PARTS LIST



NOTE:

THE MOUNTING HARDWARE FOR MOUNTING THE PIK-TATCH TO THE LOADER BUCKET IS PART NUMBERS 10, 11 & 12.

19	1	N12105	CAP, PIK-TATCH RIGHT FORK
18	2	4105	ZERK, GREASE (SCREW-IN)
17	1	4013	BOLT, 1/2" X 1-1/2" GRADE 5
16	3	4068	WASHER, FLAT 1/2"
15	3	4155	WASHER, LOCK 1/2"
14	2	4012	BOLT, 1/2" X 1-1/4" GRADE 5
13	1	N12571	FRAME, 70" PIK-TATCH ROCKPICKER (MODEL 700)
	1	N12564	FRAME, 64" PIK-TATCH ROCKPICKER (MODEL 640)
	1	N12092	FRAME, 58" PIK-TATCH ROCKPICKER (MODEL 580)
12	2	4021	BOLT, 5/8" X 1-3/4" GRADE 5
11	2	4070	WASHER, LOCK 5/8"
ITEM	QTY	PART NO	DESCRIPTION

10	2	4164	WASHER, 2-3/4" OD X 5/8" ID X 1/4" THK.
9	1	N12113	PIN, REAR CYLINDER
8	2	4195	BOLT, 3/8" X 1" GRADE 5
7	3	4065	WASHER, LOCK 3/8"
6	3	4005	BOLT, 3/8" X 1-1/4" GRADE 5
5	3	4064	WASHER, FLAT 3/8"
4	1	N12091	SHIELD, CYLINDER
3	1	8307	CYLINDER, HYDRAULIC (2" X 8")
2	1	4309	PIN, CUTTER (3/16" X 2-5/8")
	1	N12572	FORK, 70" PIK-TATCH (MODEL 700)
	1	N12565	FORK, 64" PIK-TATCH (MODEL 640)
1	1	N12101	FORK, 58" PIK-TATCH (MODEL 580)
	1	N12101	FORK, 58" PIK-TATCH (MODEL 580)
ITEM	QTY	PART NO	DESCRIPTION