

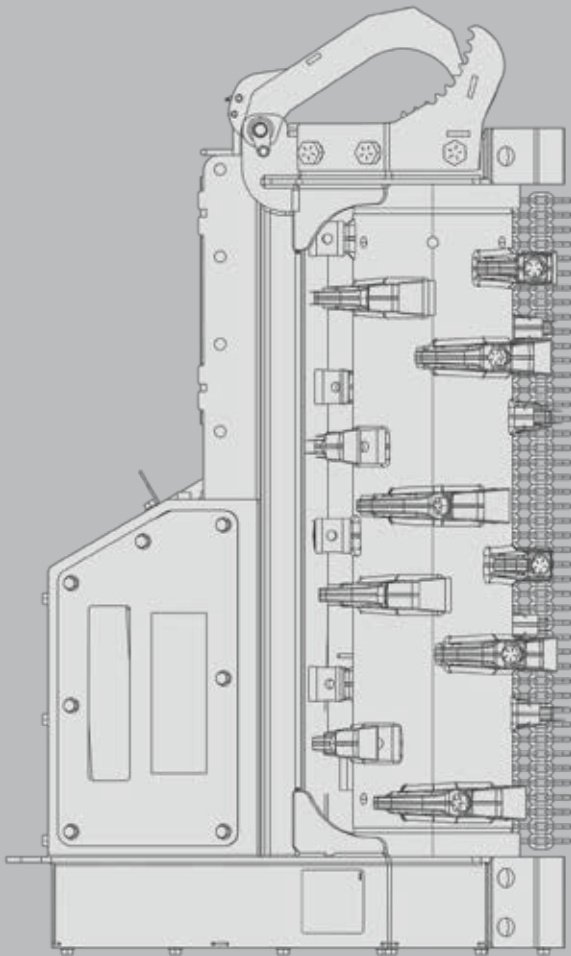


LOFTNESS[®]

AN EMPLOYEE-OWNED COMPANY

Battle Ax[®] Excavator

**DESIGNED WITH
PRODUCTIVITY
IN MIND**





DON'T BITE OFF MORE THAN YOU CAN CHEW... OR LESS

The Battle Ax® is a truly unique mulching head from Loftness®. It has an innovative depth gauge design that's proven to perform better than any other bite-control rotor® on the market. Plus, the two-stage cutting chamber is a more effective solution for sizing material than drum mulchers that use hydraulic doors to trap material. The combination of these features and more allow the Battle Ax to process material more thoroughly and complete jobs quicker than competitive units. Not to mention, our products are backed by a large dealer network and superior customer support from our 100-percent employee-owned company based in the U.S.A. We're proud of our Battle Ax mulching head...and so are the people who run them.



20 SERIES

10,000 - 20,000 lb Excavators
31", 41" & 51" Cutting Width
13.5" Diameter Rotor



30 SERIES

18,000 - 36,000 lb Excavators
41" & 51" Cutting Width
17" Diameter Rotor



40 SERIES

36,000 - 60,000 lb Excavators
51" Cutting Width
17" Diameter Rotor



50 SERIES

50,000 - 88,000 lb Excavators
51" Cutting Width
21" Diameter Rotor

// *Depth Gauges*

The Battle Ax[®] rotor includes built-in depth gauges, which function similarly to raker teeth on chain saws to prevent the attachment from engaging too much material at one time. This unique design is more ideal for managing the amount of material being fed into the attachment than competitive ring-style rotors, which many operators find to be overly limiting.



// *Two-Stage Cutting Chamber*

The Battle Ax features the Loftness[®]-exclusive two-stage cutting chamber design, which is capable of processing material more thoroughly than competitive units by cutting material twice. Material is initially cut by the replaceable primary shear bar, located on the rear bumper. Then, a secondary shear bar behind the front bumper drives material back down into the knives for further processing before it is discharged to the ground.



// *Belt Drive*

A heavy-duty belt drive isolates the motor from the rotor, helping to achieve high performance and long service life.



// *Staggered/Spiral Tooth Pattern*

A staggered tooth arrangement ensures single-tooth contact with the work surface at all times while maintaining optimal rotor balance.



// *Mounting Options*

A variety of mounts are available for attaching the Battle Ax to any make of excavator. Pin-on and pin grabber styles are available.



20 SERIES

10,000-20,000 lbs Excavators

	31BX20	41BX20	51BX20
Cutting Width	31" (0.79 m)	41" (1.04 m)	51" (1.3 m)
Overall Width	46.25" (1.17 m)	56.25" (1.43 m)	66.25" (1.68 m)
Weight Without Mount	879 lbs (398.7 kg)	1,084 lbs (491.7 kg)	1,218 lbs (552.5 kg)
Number Of Teeth	20	26	32
Hydraulic Horsepower Range	20-70	25-70	25-70
Hydraulic Flow Range	15-35.9 GPM	15-35.9 GPM	15-35.9 GPM
Recommended Excavator Weight	10,000-15,000 lbs	15,000-20,000 lbs	15,000-20,000 lbs

SPECIFICATIONS

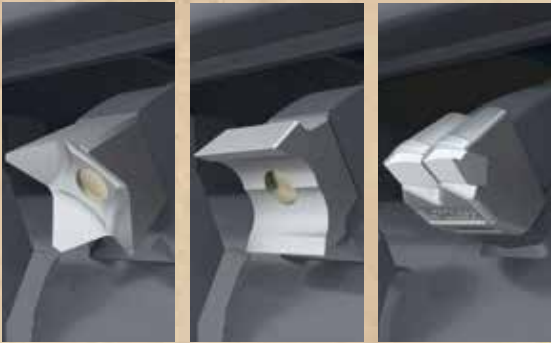
FEATURES

- › **“Battle Ax®” Rotor Design** - Uses Built-In “Depth Gauges” to Control Cutting Depth, Like “Raker” Teeth on a Chainsaw
- › **Two-Stage Cutting Chamber** - 2 Shear Bars, Producing a Finer Mulch With Fewer Passes
- › **Adjustable Primary Shear Bar**
- › **Three Tooth Designs** - 4 Point Beaver Teeth, Quadco Reversible Planer Knives or Double Carbide Teeth
- › Efficient Staggered/Spiral Tooth Pattern
- › Optional Mounts - Pin-On, Pin Grabber or Tilt Hitch
- › Optional Spade Hook - With Optional Hydraulic Thumb
- › **Optional Tilt Hitch** - Allows Battle Ax to Be Tilted up to 45 Degrees to the Left or Right
- › Machined Anti-Wrap Bearing Protection
- › Power Requirement - 20-70 Hydraulic HP (15-35.9 GPM @ up to 4100 PSI)
- › 45cc Fixed Displacement Gear Motor
- › Case Drain Highly Recommended
- › 3 Band Belt Drive
- › 13.5 in (34 cm) Diameter Rotor
- › Rotor Speed 1700-2300 RPM
- › 1 3/4 in (44.5 mm) Piloted Double Taper Roller Bearings
- › Steel Deflector Chains
- › Premium Strength Steel Housing



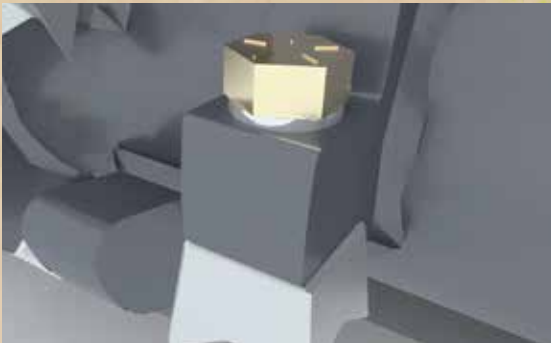
// **High-Pressure Gear Motor**

The 20 Series Battle Ax® features a 45cc high-pressure gear motor for excavators with hydraulic systems ranging from 15 to 35.9 gallons per minute and up to 4,100 PSI (20 to 70 hydraulic horsepower). This reliable motor turns the rotor from 1,700 to 2,300 RPM.



// **Three Teeth Options**

The 20 Series Battle Ax is available with 4 Point Beaver Teeth, Quadco Reversible Planer Knives or Double Carbide Teeth.



// **Tooth Mounting**

The cutting teeth are mounted to the rotor with a single bolt. They can be easily reversed or replaced on the jobsite using a common hex socket.



// **Optional Spade Hook/Hydraulic Thumb**

The spade hook is a useful tool for positioning material to be mulched. A hydraulic thumb is also optional for added versatility.



// **Optional Tilt Hitch**

When equipped with the Tilt Hitch, a mulching head can be hydraulically tilted up to 45 degrees to the left or right.

SEE THE FULL LIST OF FEATURES AND SPECS AT **LOFTNESS.COM**
or call 800-828-7624.





30 SERIES

18,000-36,000 lbs Excavators

SPECIFICATIONS

	41BX30	51BX30
Cutting Width	41" (1.04 m)	51" (1.3 m)
Overall Width	56.375" (1.43 m)	66.375" (1.69 m)
Weight Without Mount	2,010 lbs (911.7 kg)	2,210 lbs (1,002.4 kg)
Number Of Teeth	20	26
Hydraulic Horsepower Range	45-150	45-150
Hydraulic Flow Range	20-60 GPM	20-60 GPM
Recommended Excavator Weight	18,000-36,000 lbs	18,000-36,000 lbs

FEATURES

- › **“Battle Ax®” Rotor Design** - Uses Built-In “Depth Gauges” to Control Cutting Depth, Like “Raker” Teeth on a Chainsaw
- › **Two-Stage Cutting Chamber** - 2 Shear Bars, Producing a Finer Mulch With Fewer Passes
- › **Adjustable Primary Shear Bar**
- › **Three Tooth Designs** - Reversible Planer, Hard Surface Planer or Double Carbide
- › Efficient Staggered/Spiral Tooth Pattern
- › Optional Mounts - Pin-On, Pin Grabber or Tilt Hitch
- › Optional Spade Hook - With Optional Hydraulic Thumb
- › **Optional Tilt Hitch** - Allows Battle Ax to Be Tilted up to 45 Degrees to the Left or Right
- › Power Requirement - 45-150 Hydraulic HP (20-60 GPM @ up to 6000 PSI)
- › 105cc Adjustable Displacement Piston Motor
- › 37 mm Synchronous Belt
- › 17 in (43.2 cm) Diameter Rotor
- › Rotor Speed 1800-2500 RPM
- › 2 3/16 in (55.56 mm) Piloted Double Taper Roller Bearings
- › Machined Anti-Wrap Bearing Protection
- › Steel Deflector Chains
- › Premium Strength Steel Housing



// Adjustable-Displacement Piston Motor

The 30 Series Battle Ax® features a 105cc adjustable displacement piston motor for excavators with hydraulic systems ranging from 20 to 60 gallons per minute and up to 6,000 PSI (45 to 150 hydraulic horsepower). This motor turns the rotor from 1,800 to 2,500 RPM and can be manually adjusted for fine-tuning performance on a variety of excavators.



// Three Teeth Options

The 30 Series Battle Ax is available with three tooth options: Quadco planer blades, hard-surface Quadco blades and double carbide teeth.



// Tooth Mounting

The cutting teeth are mounted to the rotor with a single bolt. They can be easily reversed or replaced on the jobsite using a common hex socket.



// Optional Spade Hook/Hydraulic Thumb

The spade hook is a useful tool for positioning material to be mulched. A hydraulic thumb is also optional for added versatility.



// Optional Tilt Hitch

When equipped with the Tilt Hitch, a mulching head can be hydraulically tilted up to 45 degrees to the left or right.

SEE THE FULL LIST OF FEATURES AND SPECS AT **LOFTNESS.COM**
or call 800-828-7624.





40 SERIES

36,000-60,000 lbs Excavators

51BX40

Cutting Width	51" (1.3 m)
Overall Width	80.6" (2.05 m)
Weight Without Mount	3,010 lbs (1,365.3 kg)
Number Of Teeth	26
Hydraulic Horsepower Range	80-210
Hydraulic Flow Range	25-75 GPM
Recommended Excavator Weight	36,000-60,000 lbs

SPECIFICATIONS

FEATURES

- › **“Battle Ax®” Rotor Design** - Uses Built-In “Depth Gauges” to Control Cutting Depth, Like “Raker” Teeth on a Chainsaw
- › **Two-Stage Cutting Chamber** - 2 Shear Bars, Producing a Finer Mulch With Fewer Passes
- › **Adjustable Primary Shear Bar**
- › **Three Tooth Designs** - Reversible Planer, Hard Surface Planer or Double Carbide
- › Efficient Staggered/Spiral Tooth Pattern
- › Optional Mounts - Pin-On or Pin Grabber
- › Optional Spade Hook
- › **Optional Tilt Hitch** - Allows Battle Ax to Be Tilted up to 45 Degrees to the Left or Right
- › Machined Anti-Wrap Bearing Protection
- › Power Requirement - 80-210 Hydraulic HP (25-75 GPM @ up to 6000 PSI)
- › 135cc Adjustable Displacement Piston Motor
- › 68 mm Synchronous Belt
- › 17 in (43.2 cm) Diameter Rotor
- › Rotor Speed 1800-2500 RPM
- › 2 1/2 in (63.5 mm) Piloted Double Taper Roller Bearings
- › Steel Deflector Chains
- › Premium Strength Steel Housing



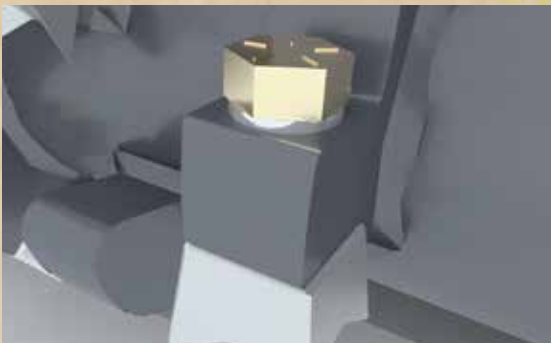
// Adjustable-Displacement Piston Motor

The 40 Series Battle Ax® features a 135cc adjustable displacement piston motor for excavators with hydraulic systems ranging from 25 to 75 gallons per minute and up to 6,000 PSI (80 to 210 hydraulic horsepower). This motor turns the rotor from 1,800 to 2,500 RPM and can manually adjusted for fine-tuning performance on a variety of excavators.



// Three Teeth Options

The 40 Series Battle Ax is available with three tooth options: Quadco planer blades, hard-surface Quadco blades and double carbide teeth.



// Tooth Mounting

The cutting teeth are mounted to the rotor with a single bolt. They can be easily reversed or replaced on the jobsite using a common hex socket.



// Optional Spade Hook

The optional spade hook is a useful tool for positioning material to be mulched.



// Optional Tilt Hitch

When equipped with the Tilt Hitch, a mulching head can be hydraulically tilted up to 45 degrees to the left or right.

SEE THE FULL LIST OF FEATURES AND SPECS AT **LOFTNESS.COM**
or call 800-828-7624.





50 SERIES

50,000-88,000 lbs Excavators

51BX50

Cutting Width	51" (1.3 m)
Overall Width	85.5" (2.17 m)
Weight Without Mount	4,200 lbs (1,365.3 kg)
Number Of Teeth	20
Hydraulic Horsepower Range	100-350
Hydraulic Flow Range	35-105 GPM
Recommended Excavator Weight	50,000-88,000 lbs

SPECIFICATIONS

FEATURES

- › **“Battle Ax®” Rotor Design** - Uses Built-In “Depth Gauges” to Control Cutting Depth, Like “Raker” Teeth on a Chainsaw
- › **Two-Stage Cutting Chamber** - 2 Shear Bars, Producing a Finer Mulch With Fewer Passes
- › **Adjustable Primary Shear Bar**
- › **Triple Carbide Teeth**
 - › Efficient Staggered/Spiral Tooth Pattern
 - › Optional Mounts - Pin-On or Pin Grabber
 - › Optional Spade Hook
 - › Machined Anti-Wrap Bearing Protection
- › Power Requirement - 100-350 Hydraulic HP (35-105 GPM @ up to 6000 PSI)
- › 165cc Adjustable Displacement Piston Motor
- › 68 mm Synchronous Belt
- › 21 in (53.3 cm) Diameter Rotor
- › Rotor Speed 1700-1900 RPM
- › 3 in (76.2 mm) Piloted Double Taper Roller Bearings
- › Steel Deflector Chains
- › Premium Strength Steel Housing



// Adjustable-Displacement Piston Motor

The 50 Series Battle Ax® features a 165cc adjustable displacement piston motor for excavators with hydraulic systems ranging from 35 to 105 gallons per minute and up to 6,000 PSI (100 to 350 hydraulic horsepower). This motor turns the rotor from 1,700 to 1,900 RPM and can manually adjusted for fine-tuning performance on a variety of excavators.



// Triple Carbide Teeth

The triple carbide teeth are engineered specifically for the most powerful excavators. They feature an overlapping cap design that helps prevent the tooth mounts from damage if the rotor is driven into rocks.



// Tooth Mounting

The triple carbide teeth are mounted to the rotor with a single bolt. They can be easily reversed or replaced on the jobsite using a common hex socket.



// Optional Spade Hook

The optional spade hook is a useful tool for positioning material to be mulched.



// Synchronous Belt Drive

The positive drive, cog belt and sprocket design increase efficiency and require less maintenance than other drive types.

SEE THE FULL LIST OF FEATURES AND SPECS AT **LOFTNESS.COM**
or call 800-828-7624.



BUILD & PRICE TOOL

Customize your Battle Ax with our online Build and Price tool. loftness.com/vm-build-and-price



cool flow
Auxiliary Hydraulic Cooler



kwik TRIM



// GRAIN BAGGING

// CROP SHREDDERS

// VEGETATION MANAGEMENT

// FERTILIZER EQUIPMENT



Call us or visit loftness.com for more information on the Battle Ax Excavator.